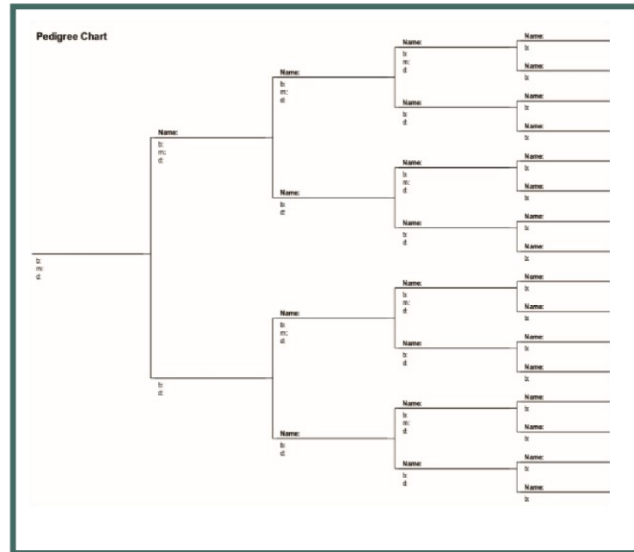


### Family Group Sheet



Let us help you fill in the blanks!



## Western Massachusetts Genealogical Society, Inc.

The Western Massachusetts Genealogical Society, Inc. is devoted to the research and documentation of family ancestry and history. We want to help others to continue learning as they research their individual family trees.

We offer presentations on basic/advanced genealogical research and provide resources for Western Mass, New England, and a variety of ethnicities.

The Western Massachusetts Genealogical Society, Inc. is a registered 501(c)3 non-profit organization, committed to consistently offering quality programming since 1972.

Visit us at

[www.westmassgen.com](http://www.westmassgen.com)

We invite you to...

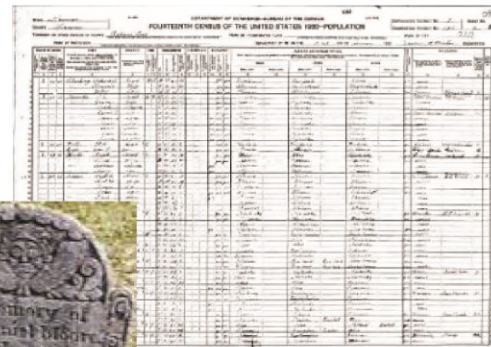
...*browse our website at* [www.westmassgen.com](http://www.westmassgen.com), which offers many resources.

...*attend* our next meeting.

...*join* to enjoy the benefits of our society.

...*contact us* with your questions or thoughts, and always feel free to share a story.

...*follow us* on Facebook.



## Our Focus:

***Whether you live in Western Massachusetts, Northern Connecticut, or across the country, membership in WMGS, Inc. can help you in your genealogical research.***

## Membership Dues:

Annual membership runs from September 1<sup>st</sup> – August 31<sup>st</sup> each year. New memberships received between July 1<sup>st</sup> and August 31<sup>st</sup>, will continue through the next calendar year. Membership rates are currently:

\$30 for an individual membership  
\$45 for a couple (same household)  
\$15 for students (under age 22)  
\$500 for Lifetime membership

## How to Join:

- **Pay by cash or check at a monthly meeting.**
- **Print and mail an application found on our website.**
- **Use the secure PayPal button on our website.**

## Contact Us:

**WMGS, Inc.**

**P.O. Box 418**

**West Springfield, MA 01090-0418**

**Email:** [westmassgen@gmail.com](mailto:westmassgen@gmail.com)

**Website:** [www.westmassgen.com](http://www.westmassgen.com)

***Unless otherwise announced, our meetings are held at the Agawam Senior Center, 954 Main St, Agawam, MA on the first Wednesday of every month from 6:00 pm to 8:00 pm***

## Come Join Us!

- Meet people with similar interests of family history and genealogy.
- Attend monthly meetings featuring local and nationally-known speakers, both live and via remote.
- Presentations cover a wide-range of genealogical topics for beginners through those with advanced skills.
- Attend Skills Night, classes or trainings, indexing clinics, and other events.
- Receive our monthly e-newsletter.
- Enjoy our Members Only offerings on our website.
- Receive assistance from our members on your family research.
- Take advantage of our Surname List to find others researching your family names.
- Use our Queries feature to seek help from others.
- Participate in our annual field trips to MOSH where members receive a private tour.
- Use our library of resources including books, repertoires, family histories, and CDs.
- Participate as a volunteer, coach, or member of the Board of Directors.

## Added Benefits for Members Only:

One of our key member benefits is access to our **Members Only** feature on our website. Some of the offerings are:

- Archived webinar presentations by many of our speakers.
- Archived lecture handouts.
- DNA Boot Camp course (12 sessions) – learn about using DNA in your research.
- Attend trainings and classes.
- An extensive list of WMass & Massachusetts resource links to help you find your WMASS ancestors.
- The Alvin Fretts Pedigree Charts Collection compiled by one of our first members.
- Thirty-five years of the American Elm quarterly newsletter (published 1972-2007), containing 5-generation charts, cemetery listings, vital records, surname listings, and more!
- Archived copies of our current monthly newsletters.

***Our list of offerings continues to grow!***

